

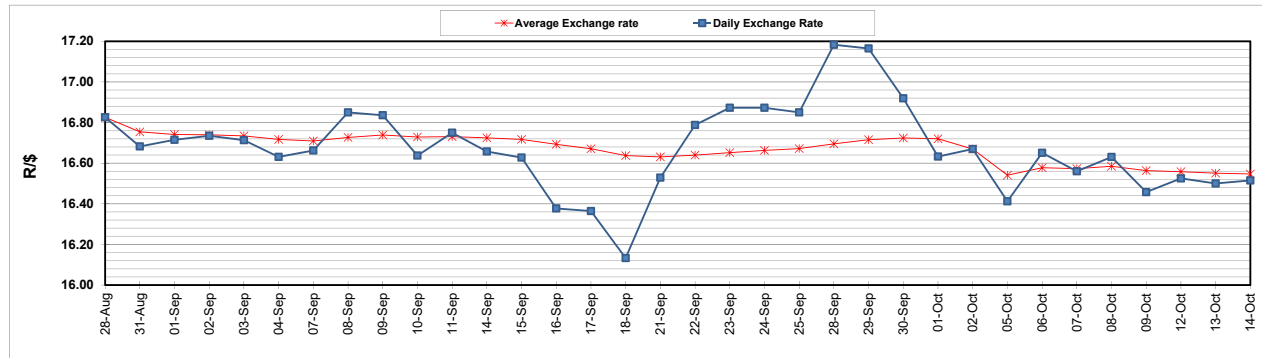
	PETROL 95 ULP	PETROL 93 ULP & LRP	DIESEL 0.05%	DIESEL 0.005%	ILL. PAR.
GAUTENG PUMP PRICE (SA c/l) AS FROM 07/10/2020	1,486.000	1,466.000	-	-	-
WHOLESALE PRICE (SA c/l) AS FROM 07/10/2020	-	-	1,237.560	1,238.960	640.828
SINGLE NATIONAL MAXIMUM RETAIL PRICE	-	-	-	-	798.000
BASIC FUEL PRICE - 14/10/2020 (SA c/l)	518.860	512.334	500.445	503.125	474.884
PRESS RELEASE CONTRIBUTION TO BFP 07/10/2020 - 14/10/2020 (SA c/l)	533.470	523.470	486.630	488.030	436.128
UNIT OVER/(UNDER) RECOVERY - 14/10/2020 (SA c/l)	14.610	11.136	(13.815)	(15.095)	(38.756)
AVERAGE BASIC FUEL PRICE 02/10/2020 - 14/10/2020	527.535	517.101	496.650	498.641	466.181
AVERAGE UNIT OVER/(UNDER) RECOVERY 02/10/2020 - 14/10/2020	16.602	14.036	19.980	20.389	(4.719)

### ANALYSIS MOVEMENT OF AVERAGE OVER/(UNDER) RECOVERY

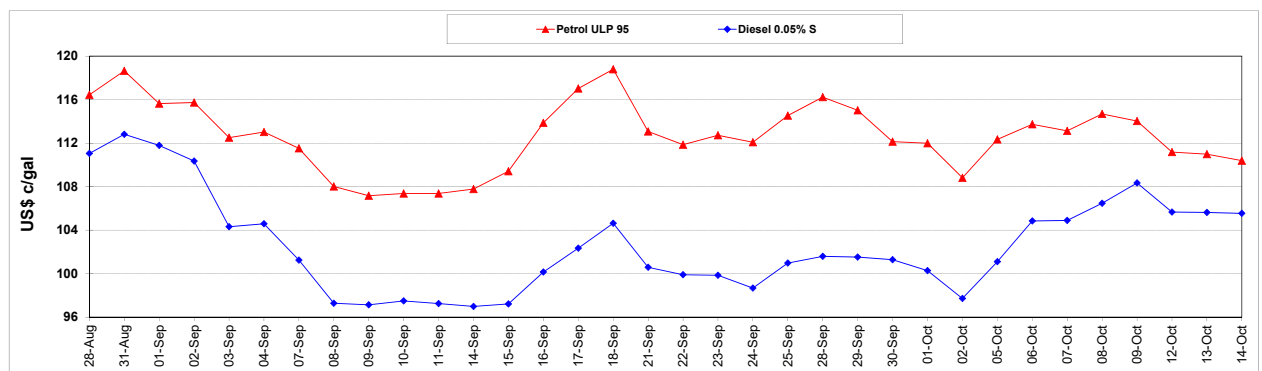
	PETROL 95	PETROL 93	DIESEL 0.05%	DIESEL 0.005%	ILL. PAR.
- MOVEMENT IN INTERNATIONAL PRODUCT PRICES	11.067	8.611	14.769	15.158	(9.611)
- MOVEMENT IN EXCHANGE RATE	5.535	5.425	5.211	5.231	4.891
AVERAGE UNIT OVER/(UNDER) RECOVERY 02/10/2020 - 14/10/2020	16.602	14.036	19.980	20.389	(4.719)

**R/\$ EXCHANGE RATE - (R/\$16.5150 - 14/10/2020)**

### EXCHANGE RATE USED IN BASIC FUEL PRICE



### INTERNATIONAL PRODUCT PRICES OF BASKET USED IN BASIC FUEL PRICE



### BASIC FUEL PRICE IN SA CENTS PER LITRE

